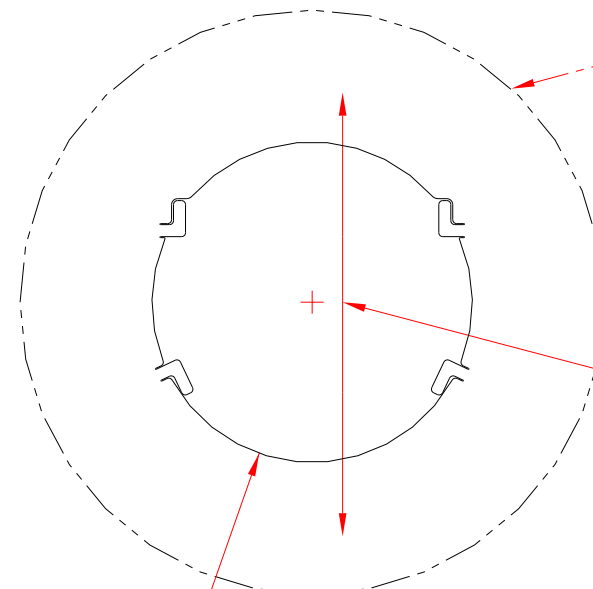
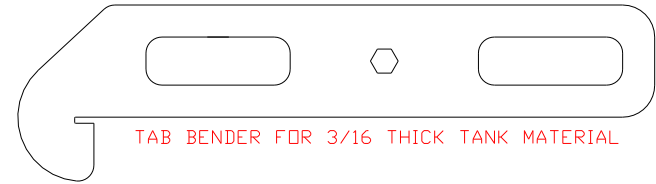


4

3

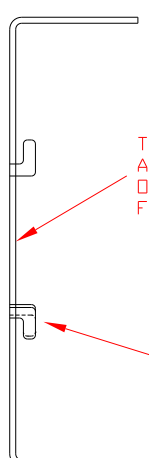
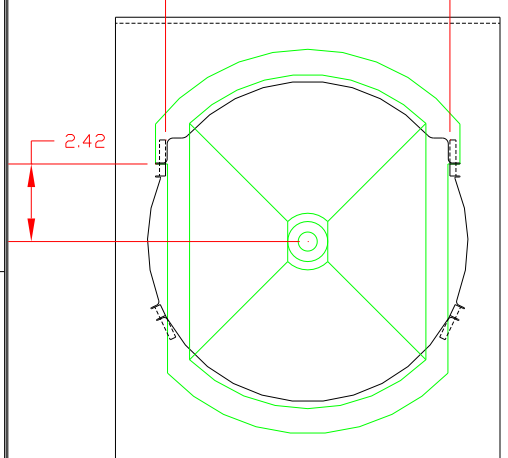
2

1



8.88 BETWEEN TABS AFTER BENDING

THIS SIDE UP FOR SIDE MOUNT



R5.00

THE BOTTOM TWO TABS CAN BE ELIMINATED IF SIDE MOUNTED

NOTE THAT 3/16 THICK MATERIAL IS USED IN THIS FORMED DRAWING. OTHER MATERIAL THICKNESSES MAY BE USED BUT SHOULD BE TESTED IN THE CUSTOMER'S APPLICATION. THE TAB BENDING TOOL WOULD HAVE TO BE MODIFIED FOR THE MATERIAL THICKNESS USED. THE TAB LENGTH MAY HAVE TO BE MODIFIED FOR THICKER MATERIALS.

THIS HOLE PATTERN SHOULD BE USED FROM THE COMPUTER GENERATED GEOMETRY FILE. IF OTHER DIMENSIONS ARE REQUIRED OR A CUTTING PROCESS BESIDES LASER OR PLASMA IS USED, PLEASE CONSULT FACTORY.

TYPICAL FORMED VIEW

US PATENT 7,721,904

NOTICE: THIS DOCUMENT AND ITS CONTENTS ARE THE PROPRIETARY CONFIDENTIAL PROPERTY OF TOMPKINS INDUSTRIES. NO USE OR COPIES MAY BE MADE WITHOUT WRITTEN PERMISSION FROM TOMPKINS INDUSTRIES.		3RD ANGLE PROJECTION	001	FLT-STL 1018 HR	3/16 THICK MATERIAL
UNLESS OTHERWISE SPEC. DIMS. IN INCHES. ANSI Y14.5M-1998 STD. TOLERANCES: XX ± .060 XXX ± .030 XXXX ± .010 FRAC DIM ± 1/22 DEG ± 1'		TOMPKINS INDUSTRIES 1912 E. 123RD STREET DLATHE, KS 66061 913-764-8088		TITLE 12-INCH CAPTURE TAB HOLE PATTERN	
B	ADDED PATENT NUMBER	9-3-10	DRAWING NUMBER: 12HoleOption		
A	FCD NEW ITEM	6-13-07	DO NOT SCALE CODE SIZE SHEET 1 OF 1 E C		
LET.	CHANGE DESCRIPTION	DATE	DESIGN BY: JAF	DATE: 6-13-07	

4

3

2

1