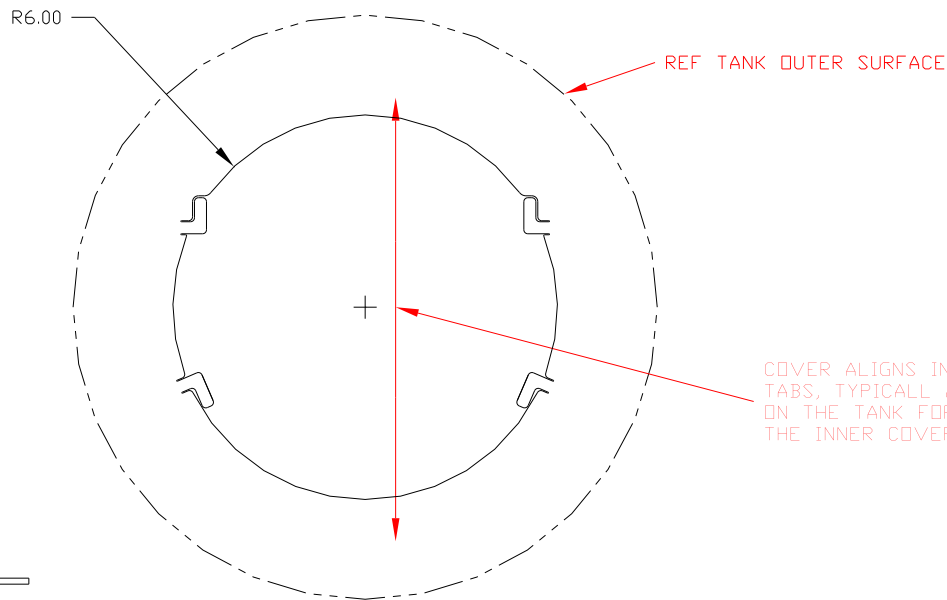
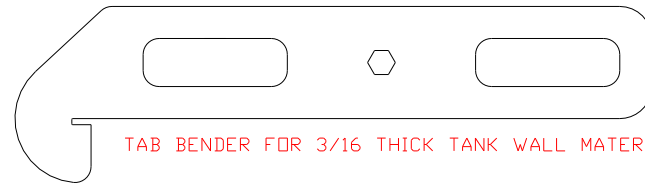


4

3

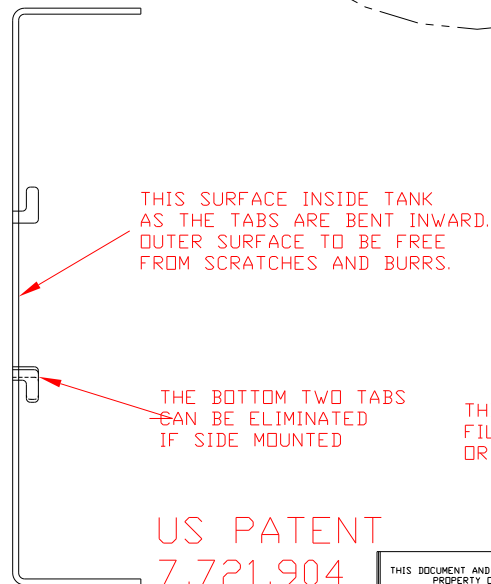
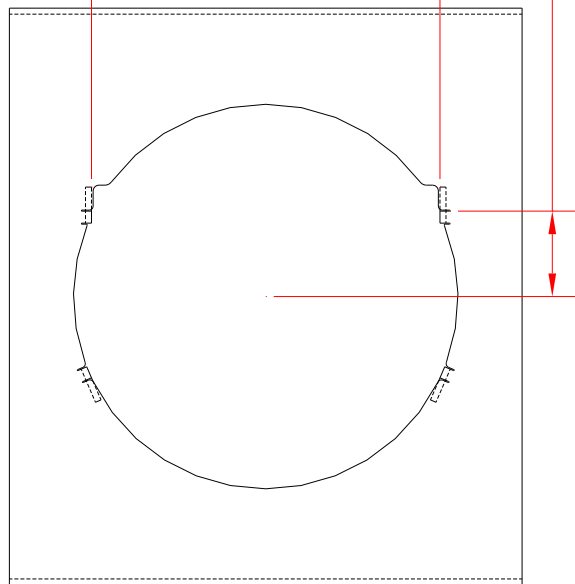
2

1



10.88 BETWEEN TABS AFTER BENDING

THIS SIDE UP FOR SIDE MOUNT



NOTE THAT 3/16 THICK MATERIAL IS USED IN THIS FORMED DRAWING. OTHER MATERIAL THICKNESSES MAY BE USED BUT SHOULD BE TESTED IN THE CUSTOMER'S APPLICATION. THE TAB BENDING TOOL WOULD HAVE TO BE MODIFIED FOR THE MATERIAL THICKNESS USED. FOR THICKER MATERIALS USED, THE TAB LENGTH MAY HAVE TO BE LENGTHENED.

THIS HOLE PATTERN SHOULD BE USED FROM THE COMPUTER GENERATED GEOMETRY FILE. IF OTHER DIMENSIONS ARE REQUIRED OR A CUTTING PROCESS BESIDES LASER OR PLASMA IS USED, PLEASE CONSULT FACTORY.

US PATENT  
7,721,904

TYPICAL FORMED VIEW

NOTICE: THIS DOCUMENT AND ITS CONTENTS ARE THE PROPRIETARY CONFIDENTIAL PROPERTY OF TOMPKINS INDUSTRIES. NO USE OR COPIES MAY BE MADE WITHOUT WRITTEN PERMISSION FROM TOMPKINS IND.		3RD ANGLE PROJECTION	001	FLT-STL 1018 HR	3/16 THICK MATERIAL	
		UNLESS OTHERWISE SPEC: DIMENS. IN INCHES ANSI Y14.5M-1982 STD. TOLERANCES: XX ± .060 XXX ± .030 XXXX ± .010 FRAC DIM ± 1/22 DEC ± .1	REQD /DASH NO	ITEM NUMBER	MATERIAL DESCRIPTION	SYM
		TOMPKINS INDUSTRIES 1912 E. 123RD STREET DLATHE KS 66061 913-764-8088	TITLE		14-INCH CAPTURE TAB HOLE PATTERN	
B ADDED PATENT NUMBER 9-3-10		DRAWING NUMBER		14HoleOption		
A FCD NEW ITEM 6-14-07		DESIGN BY: JAF		DATE: 6-14-07		DO NOT SCALE
L.T.		CHANGE DESCRIPTION		DATE		CODE SIZE
				SHEET 1 OF 1		E C

4

3

2

1