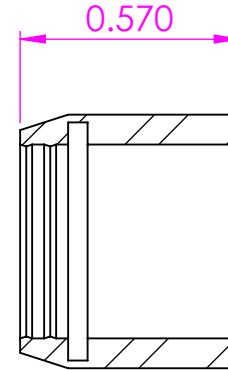


Ø 0.505



SECTION A-A

Thread 1	3/4-14	UNLESS OTHERWISE SPECIFIED:  DIMENSIONS ARE IN INCHES TOLERANCES: FRACTIONAL ± ANGULAR: MACH ± BEND ± TWO PLACE DECIMAL ± THREE PLACE DECIMAL ±		NAME	DATE	<a href="https://www.tompkinsind.com/products">https://www.tompkinsind.com/products</a>  TITLE:  <b>JIC Flareless Tube Sleeve</b>  SIZE <b>A</b> DWG. NO. <b>0419-08</b> REV SCALE: 2:1 WEIGHT: 0.0010 SHEET 1 OF 1
Thread 2	(0.50" Tube)		DRAWN	ASW	2/18/2025	
Thread 3			CHECKED			
Material	Carbon Steel		ENG APPR.			
Oring Material		INTERPRET GEOMETRIC TOLERANCING PER:	MFG APPR.			
		MATERIAL	Q.A.			
		Carbon Steel	COMMENTS:			
NEXT ASSY	USED ON	FINISH				
APPLICATION		DO NOT SCALE DRAWING				

**PROPRIETARY AND CONFIDENTIAL**  
 THE INFORMATION CONTAINED IN THIS DRAWING IS THE SOLE PROPERTY OF Tompkins Industries, INC.. ANY REPRODUCTION IN PART OR AS A WHOLE WITHOUT THE WRITTEN PERMISSION OF Tompkins Industries, INC IS PROHIBITED.