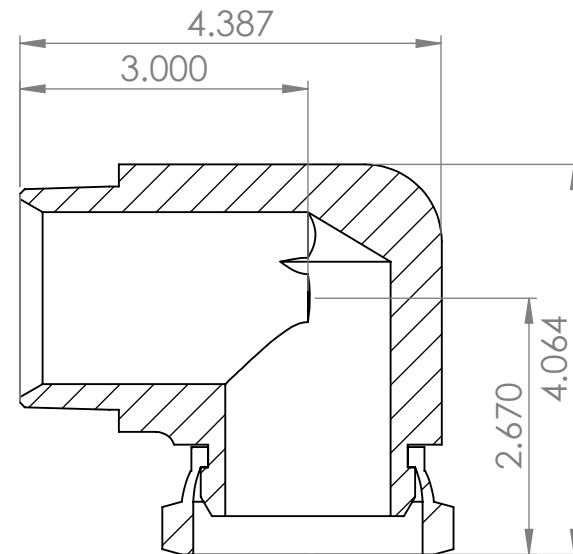
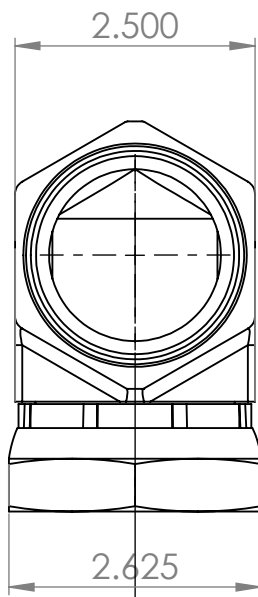


# Tompkins<sup>®</sup>

INDUSTRIES, INC.



SECTION A-A

<b>Thread 1</b>	2-11 1/2	UNLESS OTHERWISE SPECIFIED:  DIMENSIONS ARE IN INCHES TOLERANCES: FRACTIONAL $\pm$ ANGULAR: MACH $\pm$ BEND $\pm$ TWO PLACE DECIMAL $\pm$ THREE PLACE DECIMAL $\pm$		NAME	DATE
<b>Thread 2</b>	2-11 1/2		DRAWN	ASW	3/20/2024
<b>Material</b>	Carbon Steel		CHECKED		
<b>Oring Material</b>	N/A		ENG APPR.		
		INTERPRET GEOMETRIC TOLERANCING PER:	MFG APPR.		
		MATERIAL	Q.A.		
		<b>Carbon Steel</b>	COMMENTS:		
NEXT ASSY	USED ON	FINISH			
APPLICATION		DO NOT SCALE DRAWING			

**PROPRIETARY AND CONFIDENTIAL**  
 THE INFORMATION CONTAINED IN THIS DRAWING IS THE SOLE PROPERTY OF Tompkins Industries, INC.. ANY REPRODUCTION IN PART OR AS A WHOLE WITHOUT THE WRITTEN PERMISSION OF Tompkins Industries, INC IS PROHIBITED.

<https://www.tompkinsind.com/products>

TITLE:

MP x FPX 90°

SIZE	DWG. NO.	REV
<b>A</b>	<b>1501-32-32</b>	
SCALE: 1:2	WEIGHT: 3.546	SHEET 1 OF 1