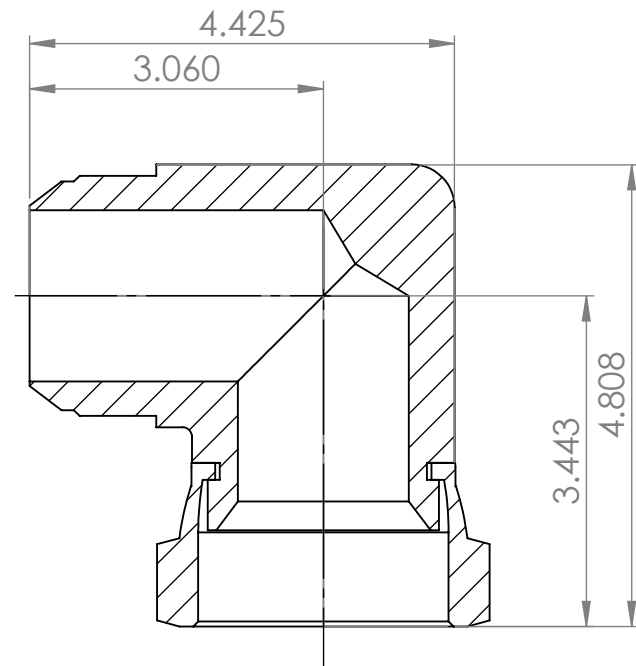
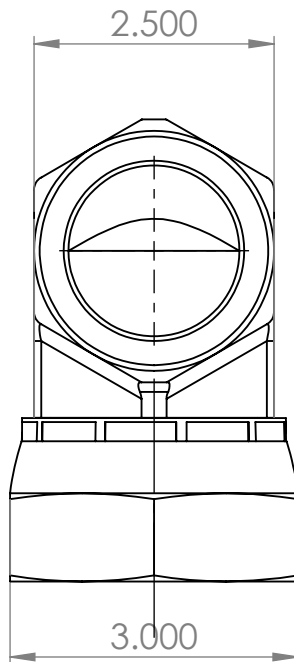


Tompkins®

INDUSTRIES, INC.



SECTION A-A

| | | | | |
|------------------------|--------------|-----------------------------|-----------|-----------|
| Thread 1 | 2 1/2-12 | UNLESS OTHERWISE SPECIFIED: | NAME | DATE |
| Thread 2 | 2 1/2-12 | DIMENSIONS ARE IN INCHES | DRAWN | ASW |
| Material | Carbon Steel | TOLERANCES: | CHECKED | 3/13/2024 |
| O-ring Material | N/A | FRACTIONAL ± | ENG APPR. | |
| | | ANGULAR: MACH ± BEND ± | MFG APPR. | |
| | | TWO PLACE DECIMAL ± | Q.A. | |
| | | THREE PLACE DECIMAL ± | COMMENTS: | |
| | | INTERPRET GEOMETRIC | | |
| | | TOLERANCING PER: | | |
| | | MATERIAL | | |
| | | Carbon Steel | | |
| | | FINISH | | |
| NEXT ASSY | USED ON | | | |
| APPLICATION | | DO NOT SCALE DRAWING | | |

PROPRIETARY AND CONFIDENTIAL
THE INFORMATION CONTAINED IN THIS DRAWING IS THE SOLE PROPERTY OF Tompkins Industries, INC.. ANY REPRODUCTION IN PART OR AS A WHOLE WITHOUT THE WRITTEN PERMISSION OF Tompkins Industries, INC IS PROHIBITED.

<https://www.tompkinsind.com/products>

TITLE:

MJIC x FJX 90°

| | | |
|------------|-------------------------|-------------|
| SIZE | DWG. NO. | REV |
| A | 6500-32-32 | |
| SCALE: 1:2 | WEIGHT: <Not Specified> | SHEET >OF 1 |