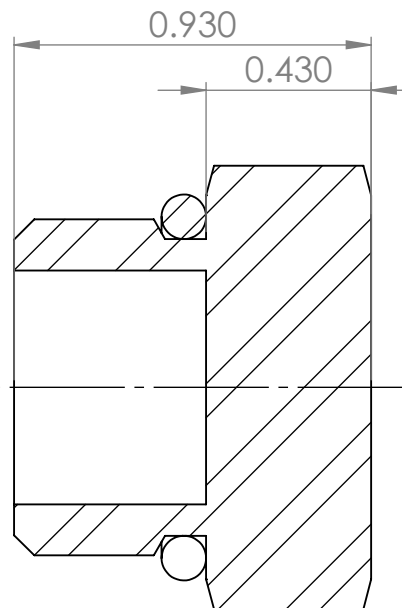
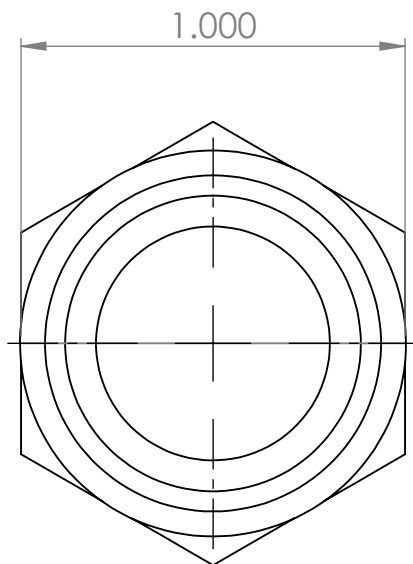


Tompkins®

INDUSTRIES, INC.



SECTION A-A

Thread 1	7/8-14	UNLESS OTHERWISE SPECIFIED: DIMENSIONS ARE IN INCHES TOLERANCES: FRACTIONAL \pm ANGULAR: MACH \pm BEND \pm TWO PLACE DECIMAL \pm THREE PLACE DECIMAL \pm		NAME	DATE
Thread 2	N/A		DRAWN	ASW	3/28/2024
Material	Carbon Steel		CHECKED		
Oring Material	90 Duro Buna-N		ENG APPR.		
		INTERPRET GEOMETRIC TOLERANCING PER:	MFG APPR.		
		MATERIAL Carbon Steel	Q.A.		
NEXT ASSY	USED ON	FINISH	COMMENTS:		
APPLICATION		DO NOT SCALE DRAWING			

PROPRIETARY AND CONFIDENTIAL
THE INFORMATION CONTAINED IN THIS DRAWING IS THE SOLE PROPERTY OF Tompkins Industries, INC.. ANY REPRODUCTION IN PART OR AS A WHOLE WITHOUT THE WRITTEN PERMISSION OF Tompkins Industries, INC IS PROHIBITED.

<https://www.tompkinsind.com/products>

TITLE:

MORB PLUG

SIZE A	DWG. NO. 6408-10	REV
SCALE: 2:1	WEIGHT: 0.138	SHEET 1 OF 1