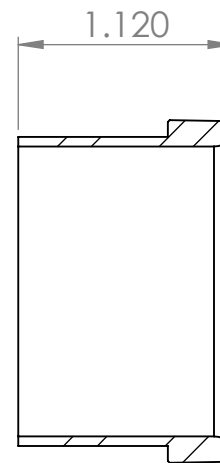
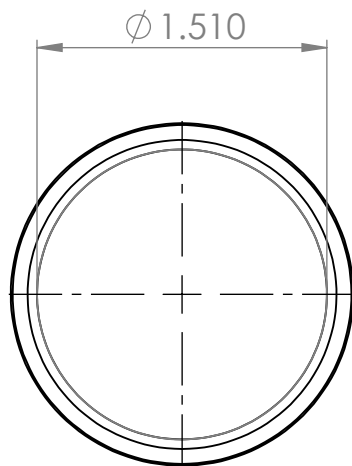


# Tompkins<sup>®</sup>

INDUSTRIES, INC.



SECTION A-A

<b>Thread 1</b>	N/A	UNLESS OTHERWISE SPECIFIED:		NAME	DATE
<b>Thread 2</b>	N/A	DIMENSIONS ARE IN INCHES	DRAWN	ASW	3/21/2024
<b>Material</b>	Carbon Steel	TOLERANCES:	CHECKED		
<b>Oring Material</b>	N/A	FRACTIONAL $\pm$	ENG APPR.		
		ANGULAR: MACH $\pm$ BEND $\pm$	MFG APPR.		
		TWO PLACE DECIMAL $\pm$	Q.A.		
		THREE PLACE DECIMAL $\pm$	COMMENTS:		
		INTERPRET GEOMETRIC TOLERANCING PER:			
		MATERIAL			
		<b>Carbon Steel</b>			
		FINISH			
NEXT ASSY	USED ON				
APPLICATION		DO NOT SCALE DRAWING			

**PROPRIETARY AND CONFIDENTIAL**  
THE INFORMATION CONTAINED IN THIS DRAWING IS THE SOLE PROPERTY OF Tompkins Industries, INC.. ANY REPRODUCTION IN PART OR AS A WHOLE WITHOUT THE WRITTEN PERMISSION OF Tompkins Industries, INC IS PROHIBITED.

<https://www.tompkinsind.com/products>

TITLE:

JIC Tube Sleeve

SIZE	DWG. NO.	REV
<b>A</b>	<b>319-24</b>	
SCALE: 1:1	WEIGHT: 0.114	SHEET 1 OF 1